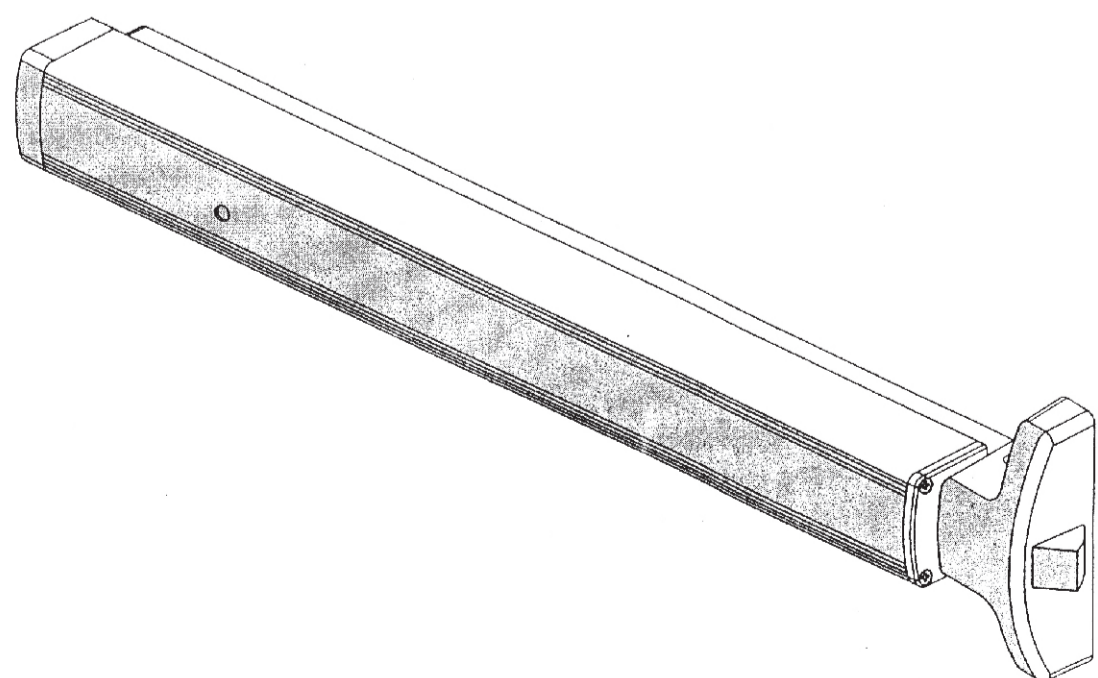




# Rim Panic Exit Device

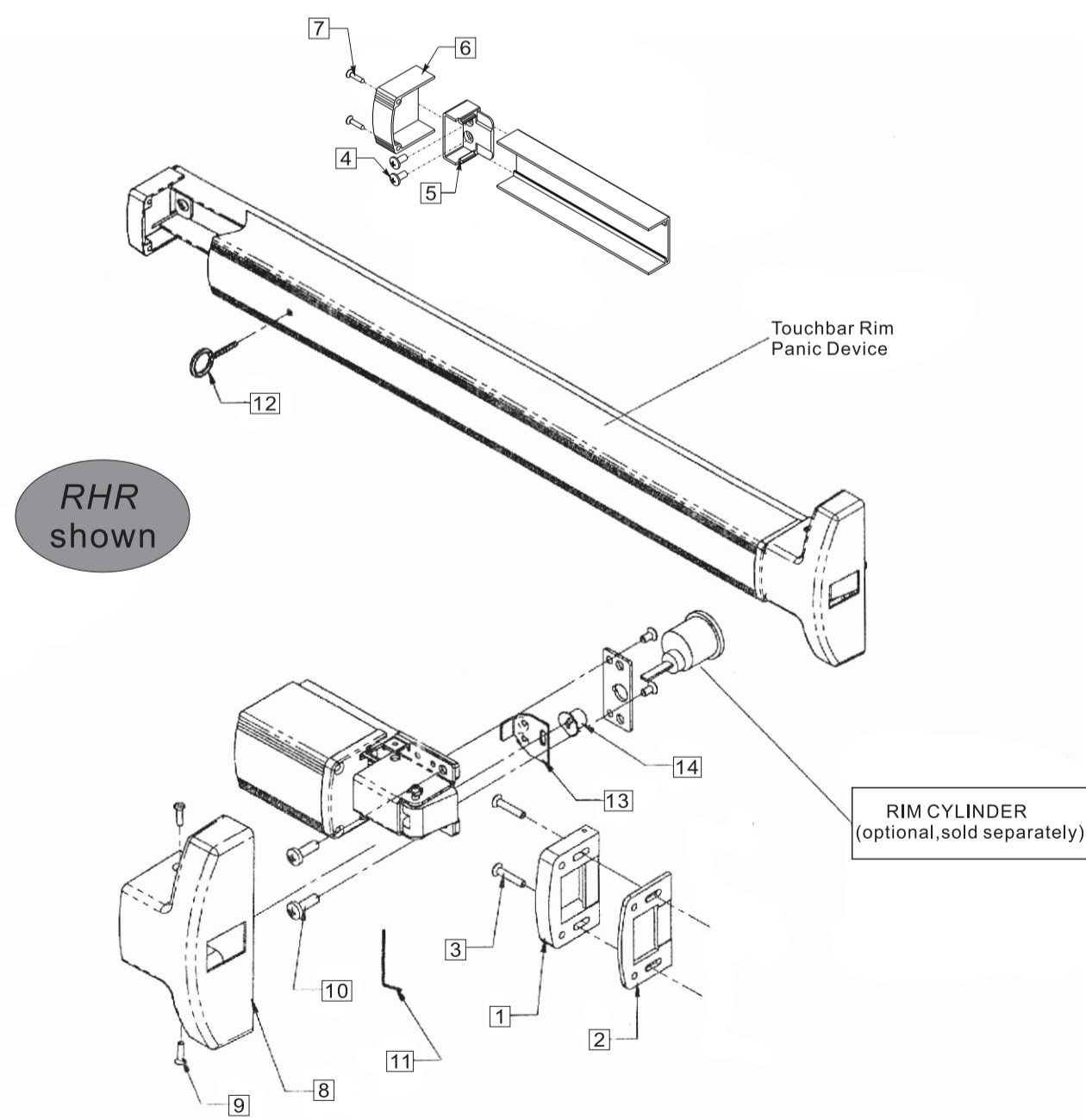
INSTALLATION INSTRUCTION

DOMINATE HARDWARE LLC



**DHED 700**

## PARTS LIST



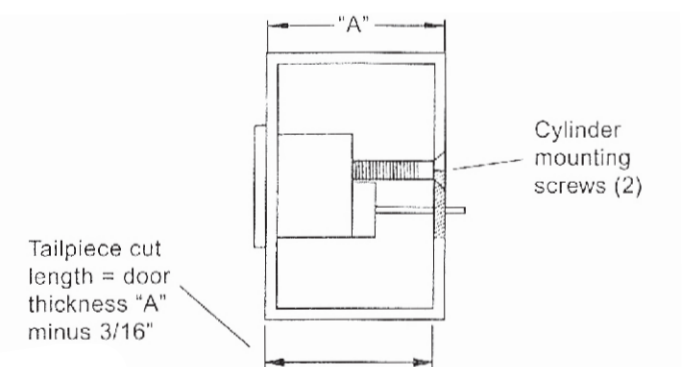
Item	Description	quantity	Item	Description	quantity
1	Strike	1	9	Cover screw, #8x5/8" FPH TC Typ 25	2
2	Shim	1	10	Screw, 1/4"-20x3/4" PPHMS	2
3	Screw, #10x1" FPHMS	2	11	Short arm allen wrench	1
4	Hinge stile mtg. screw, 1/4"-20x1/2" PPHMS	2	12	Hex dogging key	1
5	Channel end cap	1	Optional; required with rim cylinder only RIM CYLINDER sold separately		
6	Hinge stile pushbar end cap	1	13	Retractor	1
7	End cap mtg screw, #8x1-1/2" FPH TC Typ AB	2	14	Drive bushing	1
8	Center case cover	1			

Note: These parts are installed if oriented as NL/HB from factory. To convert from EO to NL or HB use this kit and rim cylinder.

## INSTALLATION (REFER TO DOOR PREPARATION TEMPLATE ON PAGE 5)

### Step 1: (Optional) Install key cylinder.

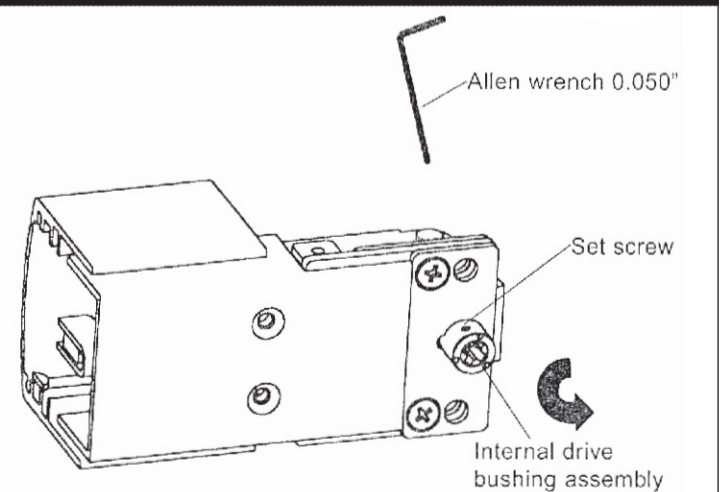
- Determine cylinder tailpiece length cut to size.
- Use two mounting screws to install rim cylinder into door.  
NOTE: Screws must be flush with surface of door.



### Step 2: Set key function for night latch (NL) or hold back (HB).

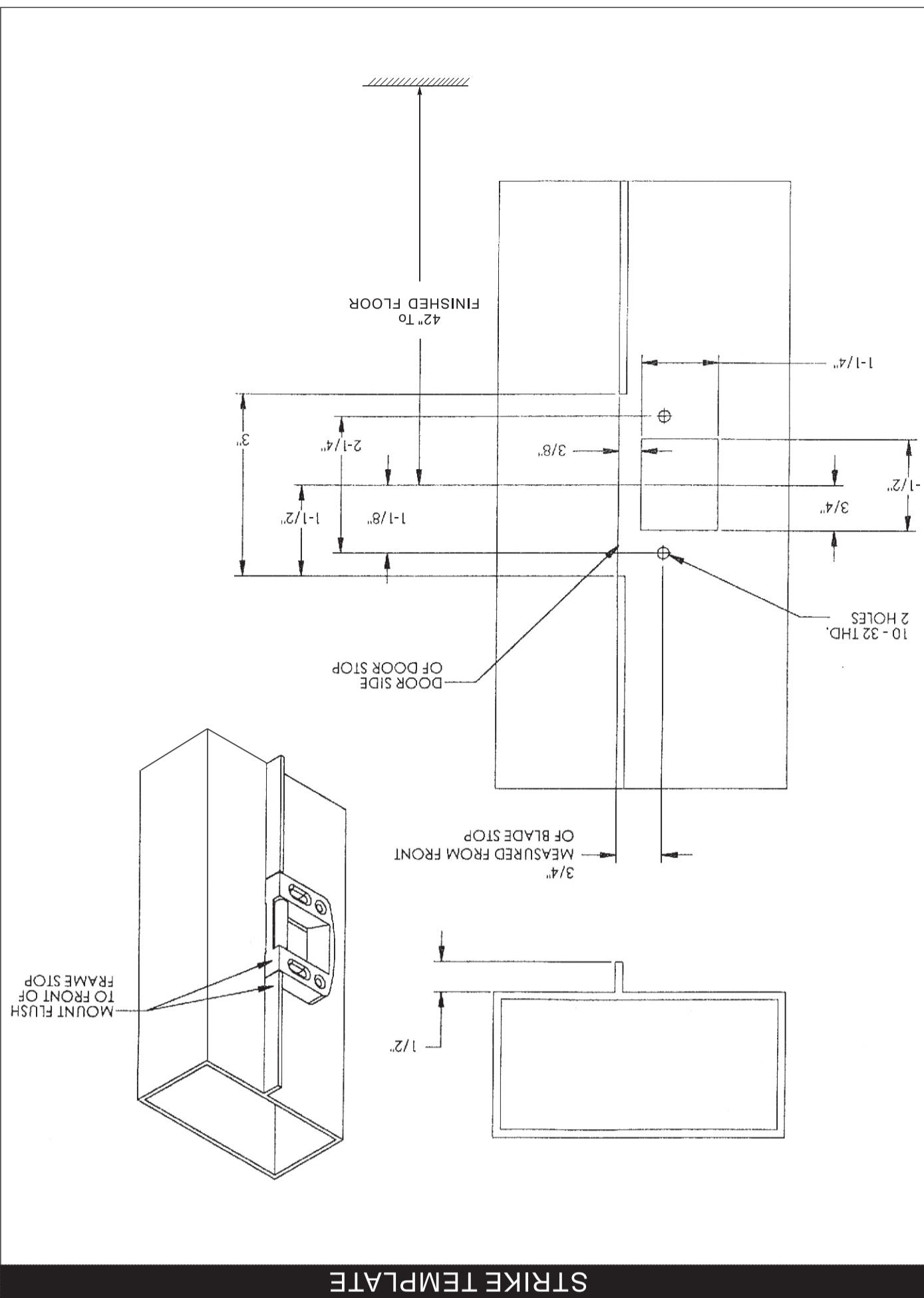
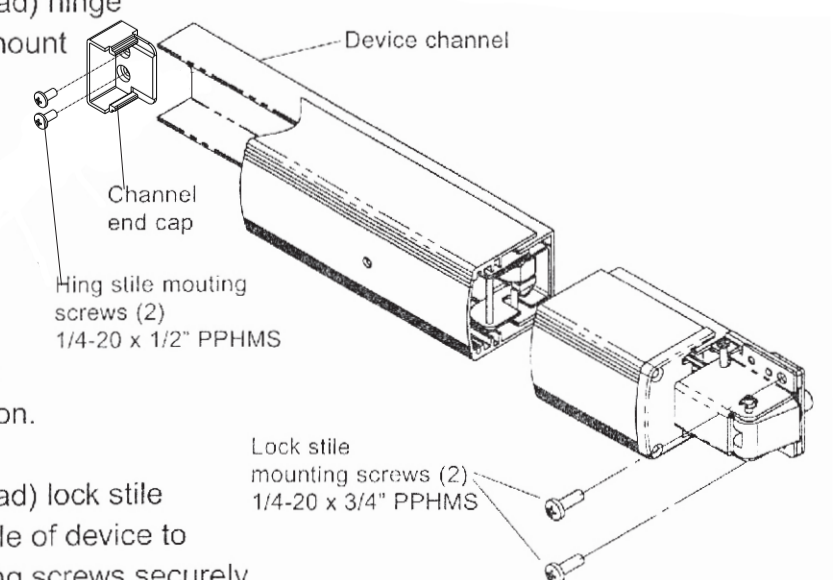
Device is factory set for NL function. To convert to HB perform following:

- Using 0.050" Allen wrench supplied, remove the set screw from the drive bushing assembly.
- Rotate internal drive bushing counterclockwise until it stops against the internal stop.
- Maintain position of drive bushing and continue.

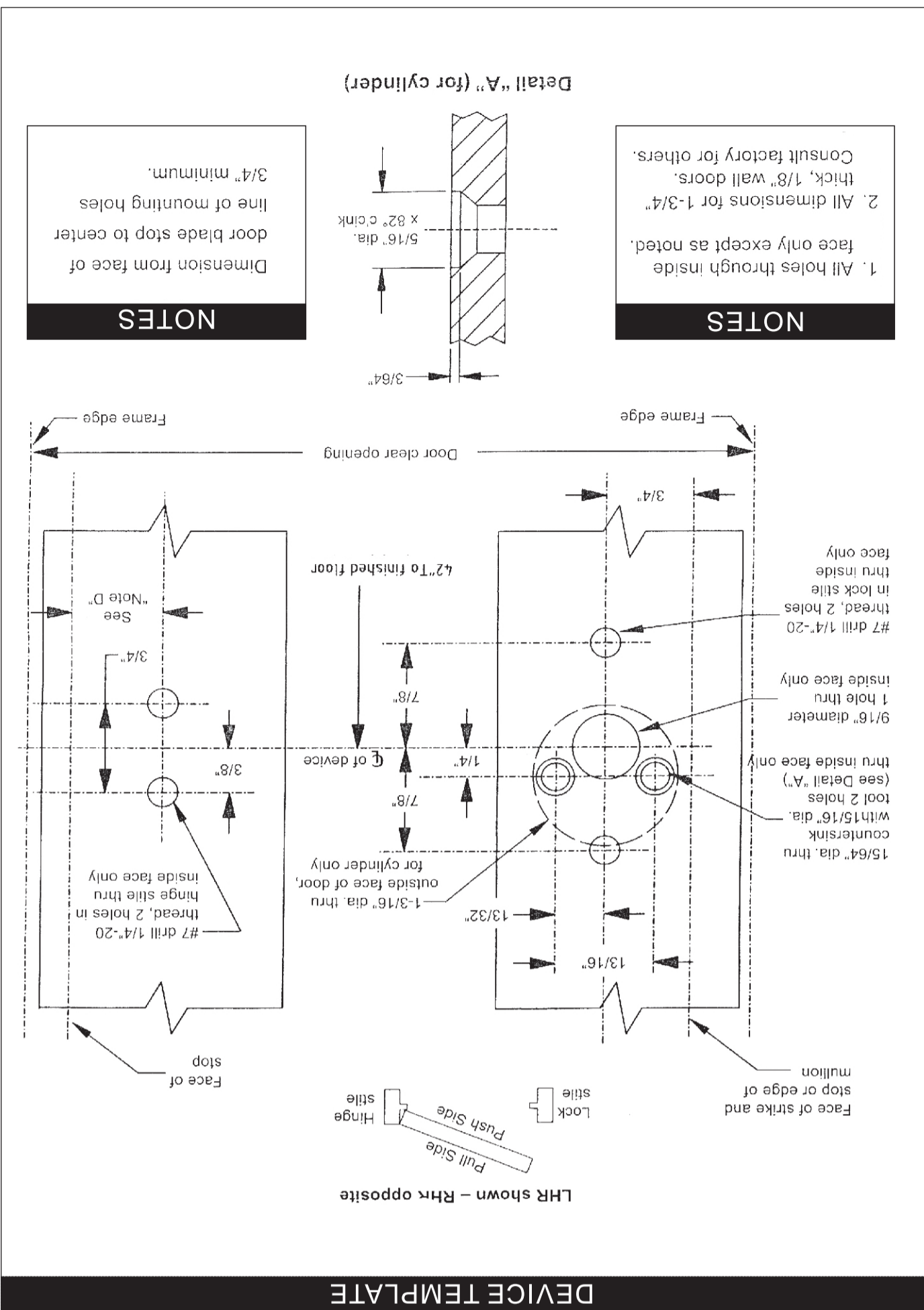


### Step 3: Mount Mechanism.

- Using two (1/4-20 x 1/2") hinge stile mounting screws, loosely mount channel end cap to door.
- Slide device channel under channel end cap aligning channel slots.
- If using key cylinder, align drive bushing assembly over tailpiece maintaining drive bushing position.
- Using two (1/4-20 x 3/4") lock stile mounting screws, attach lock stile of device to door and tighten all four mounting screws securely.



STRIKE TEMPLATE



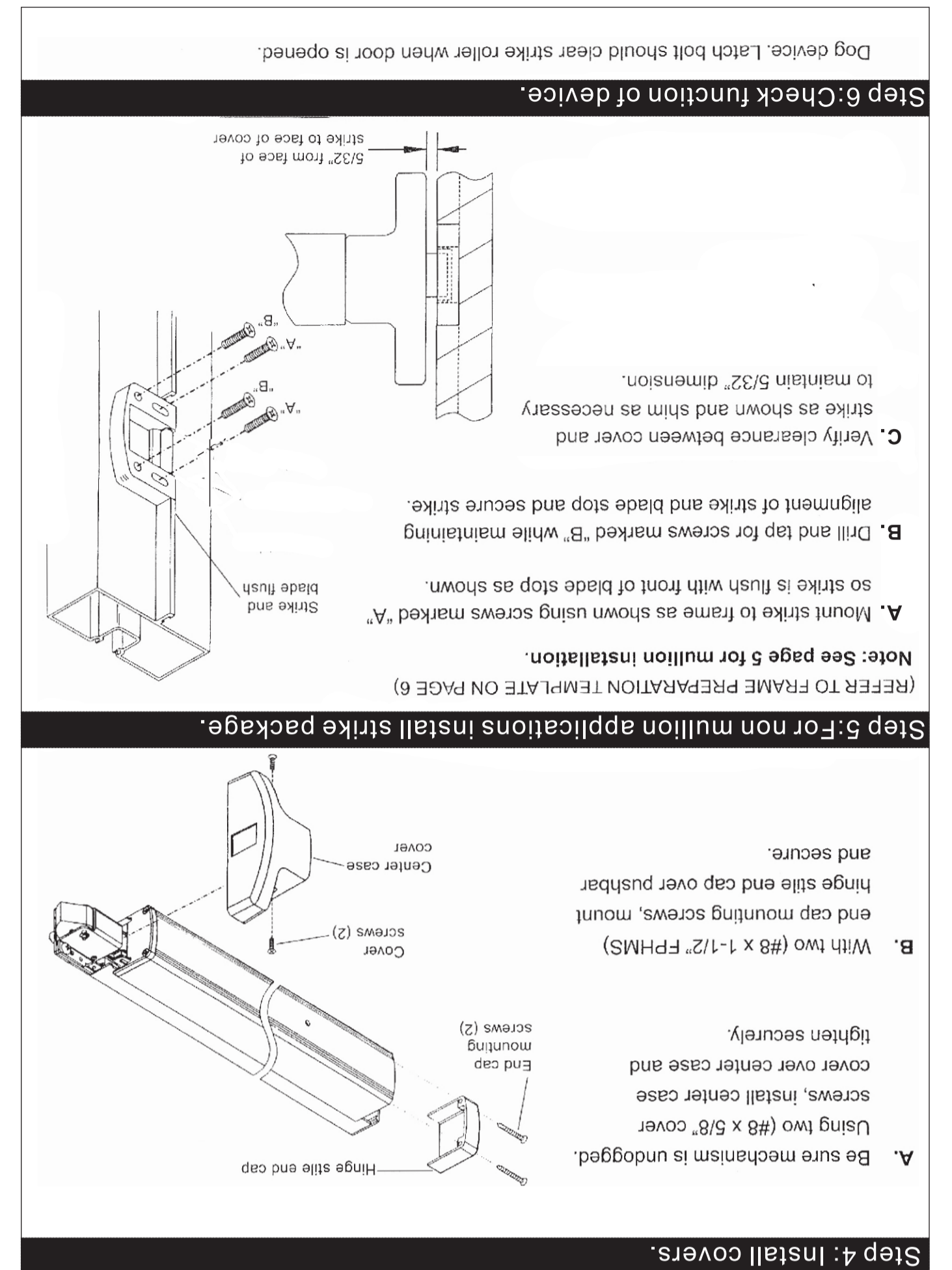
DEVICE TEMPLATE

### NOTES

Dimension from face of door blade stop to center line of mounting holes 3/4" minimum.

### NOTES

1. All holes through inside face only except as noted. Consult factory for others.  
2. All dimensions for 1-3/4" thick, 1/8" wall doors.

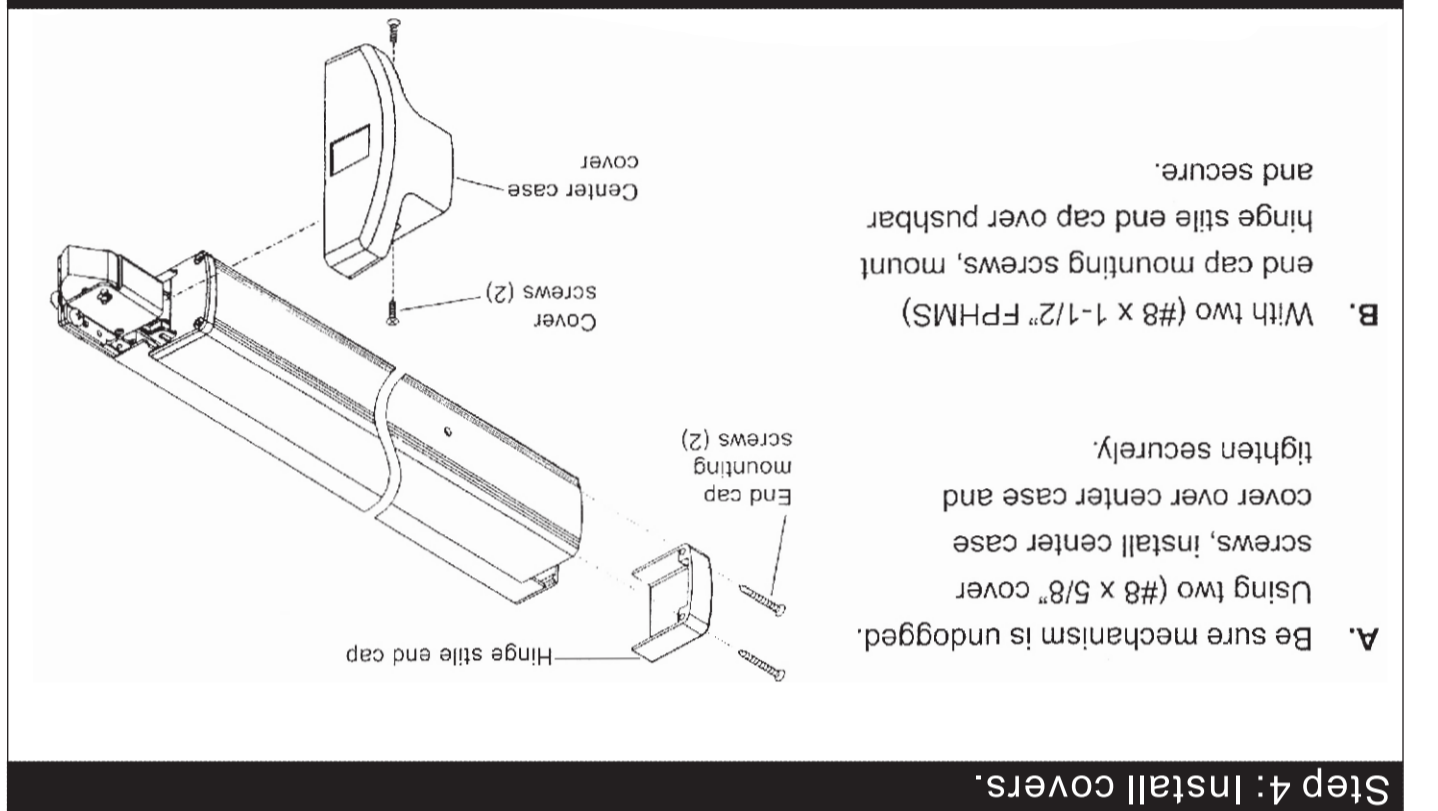


### Step 6: Check function of device.

Dog device. Latch bolt should clear strike roller when door is opened.

- Mount strike to frame as shown using screws marked "A". Strike is flush with front of blade stop as shown.
- Drill and tap for screws marked "B" while maintaining alignment of strike and blade stop and secure strike.
- Verify clearance between cover and strike as shown and shim as necessary to maintain 5/32" dimension.

### Step 5: For non mullion applications install strike package.



- Be sure mechanism is undogged.
- Using two (#8 x 5/8") cover screws, install center case and cover over center case and tighten securely.
- With two (#8 x 1-1/2" FPHMS) end cap mounting screws, mount hinge stile end cap over pushbar and secure.

### Step 4: Install covers.